

## Activity 1

1. Write the times shown on each clock in digital time.

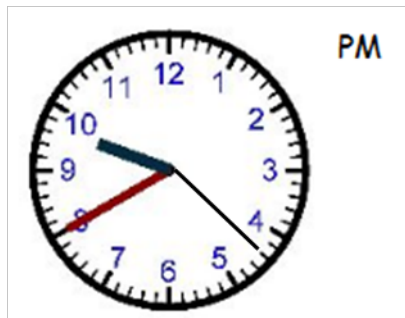
a.



b.



c.










2. Convert the following 24-hour times into 12-hour time and write each one in words.

- a. 23:45
- b. 18:17
- c. 00:05
- d. 12:35
- e. 17:15

## Activity 2

- Calculate how much time has passed (hours, minutes and seconds) between the two given times.
  - 12:18:35 to twenty minutes and 45 seconds past nine that night
  - 21:44:05 to 02:03:04
  - 5:45 pm to 23:59
- Use the extract of a TV Guide below to answer the questions that follow.

Channels		17:30	18:00	18:30	19:00	19:30	20:00
 100	★		18:00 Dish on TV				
 101	★	Show With James Corden	18:00 <b>NEW</b> The Great Christmas Light Fight		19:00 <b>NEW</b> APB		20:00 <b>NEW</b> SEAL Tea
 103	★	17:30 Moesha	18:00 <b>NEW</b> Basketball Wives LA		19:00 <b>NEW</b> Welcome To Sweetie Pie's		20:00 Top 5 Driv
 104	★		17:50 Beauty And The Beast				20:00 Indignatic
 105	★	17:35 Over The Hedge			19:00 Sammy's Adventures 2		
 106	★		18:00 Timeline				20:00 Central In
 108	★			18:30 Hart's War			

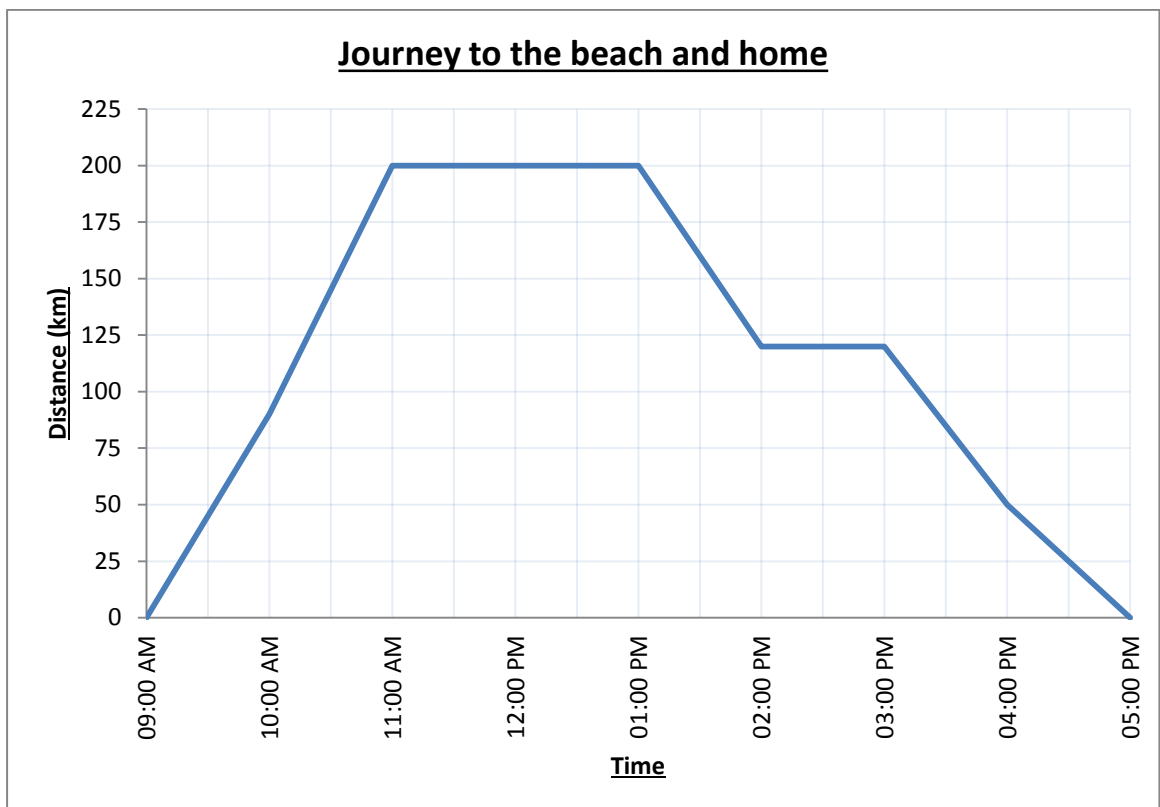
<http://guide.dstv.com/>

- How much later than Moesha does APB start?
- On which channel can Harvey watch Hart's War?
- How long is Beauty and the Beast?
- Janine wants to watch Timeline but her sister is watching Over the Hedge. How much of Timeline will she miss if she waits until her sister's movie has finished?
- Reshma watches Moesha, The Great Christmas Light Fight and then Welcome to Sweetie Pie's. For how long has she been watching TV?
- How much longer is Beauty and the Beast than Over the Hedge?

3. Study the copy of the teacher’s timetable below and answer the questions that follow.

	07:30 – 08:15	08:15 – 09:00	09:00 – 09:45	09:45 – 10:30	10:30 – 11:00	11:00 – 12:00	12:00 – 12:45	12:45 – 13:30	13:30 – 14:15
<b>Monday</b>	12 Maths Lit	12 Maths Lit		12 Geography	B	10 Maths Lit	11 Maths Lit	11 Geography	
<b>Tuesday</b>	12 Travel		11 Eng Lang	10 Geography	R	12 Maths Lit	11 Maths Lit	10 Maths Lit	
<b>Wednesday</b>	10 Maths Lit	11 Maths Lit	11 Eng Lang	10 Geography	E	12 Maths Lit	12 Eng Lang	11 LO	11 Geography
<b>Thursday</b>	10 Maths Lit	11 Maths Lit	12 LO	11 LO	A	12 Maths Lit	12 Travel	11 Geography	
<b>Friday</b>	10 Maths Lit	11 Maths Lit	12 Eng Lang	10 Geography	K	12 Maths Lit	12 Geography	12 Geography	

- a. How long is each period?
  - b. How long is the school day?
  - c. How many Grade 11 Maths Literacy lessons are taught per week?
  - d. How many hours and minutes of Grade 11 Maths Literacy does this teacher teach in a week?
  - e. How many minutes of administration time (grey blocks) does this teacher have per week?
4. Prevan’s family take a trip to the beach, which is 200 km from their home. Their journey is shown in the travel graph below.



- a. For how many hours was the family away from home?
- b. At what time did they arrive at the beach?
- c. For how long did they stay at the beach?
- d. Calculate the average speed at which they drove from home to the beach.
- e. During which time period did they drive the slowest?
- f. Suggest a reason for their low speed at this time.
- g. What was their total travelling time?