

## GRADE 10 PAPER 1: LANGUAGE PAPER MOCK JUNE EXAMINATION MEMORANDUM

### SECTION A: COMPREHENSION

Sub-total: 30 marks

#### QUESTION 1: READING FOR MEANING AND UNDERSTANDING

Refer to and detach **TEXT A** and **TEXT B** at the end of this examination and answer the set questions:

#### QUESTIONS: TEXT A

- 1.1. What type of question has been used in the title: “*What To Do During Load-shedding?*” [1]
- ✓ **It is a rhetorical question**
- 1.2. Explain the play on words in “*bring some light to your dark room*”. [2]
- ✓ **There is a play on the words “bring some light” referring to the lack of light because of load-shedding and**
  - ✓ **it is also referring to bringing some information/ advice on what to do during load-shedding.**
- 1.3. Who is the author of this article? [1]
- ✓ **Brittany Nygaard is the author**
- 1.4. What is a euphemism? [1]
- Use discretion:**
- ✓ **a mild or indirect word or expression substituted for one considered to be too harsh or blunt when referring to something unpleasant or embarrassing.**
  - ✓ **A polite way to say something that may seem harsh or offensive**
- 1.5. Provide your own example of a euphemism. [1]
- Use discretion:**
- ✓ **Some examples are: passed away, comfort break, vertically challenged, landscape artist, etc.**
- 1.6. Choose which figure of speech, “*beautifully dreadful*” is an example of: [1]
- A. Paradox
  - B. Hyperbole
  - C. Oxymoron**
  - D. Irony

1.7. Discuss the negative connotations associated with the words, “Eskom” and “load-shedding.” [1]

**Use discretion:**

- ✓ **The negative associations associated with Eskom and load-shedding are inconvenience, frustration, incompetency, uncertainty etc.**

1.8. Provide two solutions, as provided in the sub-headings, for what to do during load-shedding. [2]

- ✓ **Two of the following five: Go Green, Use your Pinterest account, Get to know your friends, Earn your degree, or Prepare in Advance**

**It must be one of the following sub-headings and not one of the solutions contained in the comprehension**

1.9. Name one benefit or positive outcome, as mentioned in the article, that we can gain out of not having electricity. Please do not refer to any of the sub-headings. [1]

**Use discretion:**

- ✓ **Any relevant benefit or advantage mentioned in the article, for example: becoming more environmentally friendly; make something from your DIY Pinterest folder; have that dinner by candlelight; have time to read that course reader from varsity, etc.**

1.10. Provide **one** example of portmanteau from the article. [1]

- ✓ **Internet**
- ✓ **Pinterest**
- ✓ **‘romcom’**

1.11. What do the words, “*Our best friend Eskom*” reveal about the author’s attitude towards Eskom? [1]

**Use discretion:**

- ✓ **It reveals her negative attitude towards Eskom and her irritation and sarcasm as she is being sarcastic about Eskom being ‘our best friend’ – Eskom is the opposite of our best friend**

1.12. What is being implied about the company, Cell C when the author states: “*unless you are fancy and have data and are not with Cell C.*”? [1]

- ✓ **That they are not a good cellphone company to belong to**
- ✓ **It is implied that one will experience problems if they belong to Cell C**

1.13. Discuss whether or not this article is biased in any way. Justify your answer with evidence. [3]

**Use discretion: at least 1 mark for explanation and up to 2 marks for evidence/ quote**

- ✓ **It is biased**
- ✓ **Biased (negatively) against Eskom and load-shedding, also biased against Cell C and Facebook in a way as well as South Africa**
- ✓ **The author expresses negative opinions and statements towards the above mentioned**
- ✓ **Evidence: “Our best friend Eskom”/ “when load-shedding makes an unwelcome visit to your district”/ “we shouldn’t be relying on appliances that rely on Eskom”/ “are not with Cell C”/ “Facebook can never be trusted”/ “this is also South Africa, the country where times are made up and no one knows what’s going on”**

1.14. Identify the theme present throughout this whole examination paper. [1]

- ✓ **Load-shedding**
- ✓ **Eskom and its load-shedding**

1.15. Comment on the effectiveness of any ONE technique used by the writer to engage the reader personally in the article and solutions. [2]

**Use discretion:**

- ✓ **Learner’s own response: must refer to one technique such as satire, humour, figurative language, style, register, use of pronouns etc. and how it helps the reader to engage personally with the article and solutions.**
- ✓ **For example: the casual register and conversational style helps the reader to feel as if the author is speaking directly to them and also makes references to ‘personal’ things such as “your ‘DIY’ Pinterest folder.” The use of personal pronouns such as ‘we’ and ‘you’ also help to make the reader feel personally involved.**

1.16. Comment critically on the suggestions made by the author about Facebook and how modern-day social skills have evolved or not evolved. [2]

**Use discretion:**

- ✓ **Learner’s own response: learners must refer to how the author feels that Facebook has provided a platform for people to not really know their friends or to have superficial friendships. She states that they don’t know their friends’ second names and they might be friends with a serial killer without knowing it.**
- ✓ **She is suggesting that old school social skills were better or more evolved than current day social skills.**

#### **QUESTIONS: TEXT B**

1.17. What is the first step to successfully using the Load Shedding Hair Dryer? [1]

- ✓ **The first step is to inflate the balloon**

1.18. Correct the error in step 4 of the instructions to make them easier to understand. [1]

- ✓ **“Repeat step 3 until hair is dry”**  
**Must identify that step 4 refers to step 3 and that without mentioning which step it is makes it ambiguous**

1.19. Explain why this ‘solution’ to load-shedding could be considered an example of hyperbole. [1]

- ✓ **It can be considered an example of a hyperbole as it is an over-exaggeration for effect/ for humour – the person is suggesting an extreme solution for drying one’s hair during load-shedding/ it is a drastic solution**

### QUESTIONS: TEXT A AND B

1.20. Provide your own definition or understanding of satire. [1]

#### **Use discretion:**

- ✓ **It is a text or performance that uses irony, mockery, or wit to expose or attack human vice, foolishness, or stupidity. It is usually intended as a moral criticism directed against injustice or social wrongs. It may be written with witty humour or with anger and bitterness. The intention: the satirist’s aim is to change the situation, to educate, and to entertain through the use of humour.**

1.21. State why TEXT A and TEXT B are considered satirical texts, then comment critically on the use of humour and satire in both texts and whether or not it has been effective. [4]

#### **Use discretion - learner’s own response**

- ✓ **They are both considered satirical texts as they make use of humour, exaggeration, mockery and ridicule to expose or attack the foolishness of Eskom and its lack of service/ supply of electricity/ maintenance of power stations. It also ridicules load-shedding and how it causes South Africans to have to dry one’s hair with a balloon, etc.**
- ✓ **The witty humour expressed in both texts pokes fun at load-shedding and exposes/ attacks the incompetency of Eskom as well as how people have to make the best of a bad situation.**
- ✓ **They must discuss the humour and the satire in both Text A and B and whether or not it has been effective. Does it effectively convey the humour and satire? Does it aim to change the situation, to educate and to entertain through the use of humour? Must provide two valid reasons.**  
**Can discuss both texts with two reasons for 2 marks or each text individually for 1 mark each.**

**TOTAL SECTION A: 30**

## SECTION B: SUMMARY

Sub-total: 10 marks

### QUESTION 2: SUMMARISING IN YOUR OWN WORDS

Refer to **TEXT C** and follow these instructions:

1. Your **paragraph-form summary** should include **5 main ideas** and consist of **80 – 90 words**. Do not use more than 90 words.
2. Indicate your word count at the end of the summary.
3. You must use your **OWN** words or you will be marked down.
4. Use full sentences with a subject and a verb.
5. Provide your own title for your summary – do not count the title as part of your word count.
6. Remember all the rules and requirements you have been taught for summaries.
7. Learners whose summaries are in point-form will be penalised.

### TEXT C

#### **Extreme power cuts to black out entire cities**

01 APR 2008 by [JEREMY LOVELL](#), [ERIC AUCHARD](#)

In the latest blow to South Africans already reeling from scheduled load-shedding, entire cities will now be plunged into darkness as Eskom institutes even more extreme power cuts. The shock development, which will be known as sector-sharing, will see the country divided into four vertical zones, each spanning many thousands of square kilometres.

Due to unprecedented power demand from consumers and unscheduled maintenance on a number of crucial generators, electricity supply in April is forecast to be so low that only three of these four zones will be switched on during peak demand times. Towns and cities in a switched-off zone can expect to be without electricity for a minimum of six hours at a time.

A grim-faced Jacob Maroga, CEO of Eskom, told a press conference in Pretoria late on Monday that the utility had little choice but to implement the aggressive new power-saving scheme. "We've done our homework ... there is just not enough power to go around," he said, adding that emergency maintenance on Eskom's generators was partly to blame.

Eskom's generator problems include damage to vital supply cables at Koeberg nuclear power station in the Western Cape. Maroga said: "A plague of rats has moved in at Koeberg and gnawed the generator cables. Government has implemented an extermination policy, but it will take time before the rodents have been eliminated." In the meantime, both of Koeberg's reactors will have to be shut down for cable repairs.

Sector-sharing starts countrywide on April 1, said Maroga, adding: "Eskom advises all consumers not to be foolish, but to save electricity where they can."

## MEMORANDUM FOR SUMMARY:

Learners must have the following points present in their summaries. Summaries will be marked as follows: 7 marks for 7 relevant main points and 3 marks for language and grammar as well as use of own words. Learners will be penalized for lifting (copying and pasting) sections of the passage.

### NEW SECTOR-SHARING PLANS TO LEAVE SOUTH AFRICA IN THE DARK (own title – don't count as part of word count)

1. Further drastic power cuts are scheduled to affect all South Africans
2. New sector-sharing will divide South Africa into four vertical zones covering thousands of square kilometres
3. Three of these zones are planned to be without power for about six hours a day
4. The causes include: unparalleled power demand; impromptu emergency maintenance on several fundamental generators; as well as damage to important supply cables by rodents at Koeberg power station
5. Eskom states that sector-sharing begins April, 1 and advises consumers to use electricity sparingly

Word count: 88

TOTAL SECTION B: 10

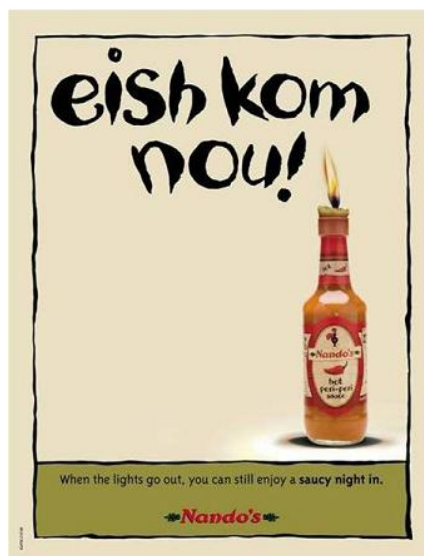
## SECTION C: LANGUAGE STRUCTURES AND CONVENTIONS

Sub-total: 30 marks

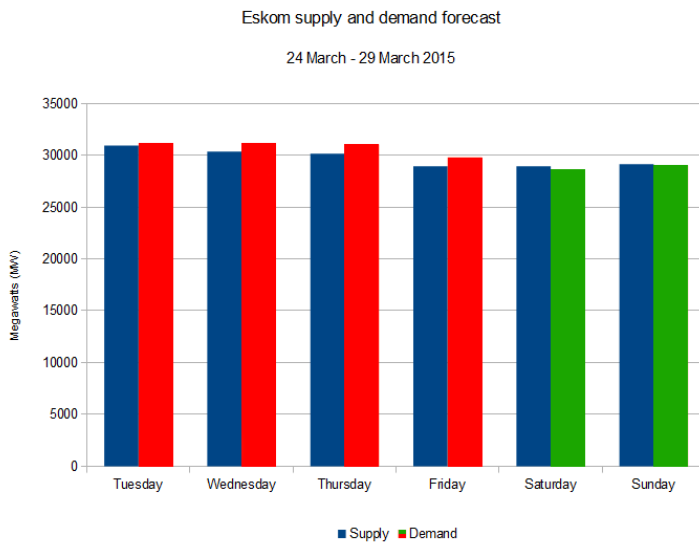
### QUESTION 3: ANALYSING ADVERTISING AND OTHER GRAPHIC TEXTS

Examine TEXT D, TEXT E and TEXT F below and then answer the set questions:

#### TEXT D:



**TEXT E:**



**TEXT F:**



**QUESTIONS: TEXT D**

3.1 To whom is Nando's referring with the words: "Eish kom nou"?

[1]

✓ **Nando's is referring to Eskom**

3.2 Explain why the quote: "When the lights go out, you can still enjoy a **saucy night in.**" can be described as making use of both a pun and innuendo.

[2]

- ✓ **It is a pun on the word "saucy" which refers to the Nando's Peri-Peri Sauce and having a night in with candlelight that may become "saucy" meaning it may lead somewhere**
- ✓ **It is also considered a sexual innuendo – referring to having a night in with someone that may lead to intercourse etc.**
- ✓ **Learners who are not mature, vulgar or offensive will not receive marks**

**QUESTIONS: TEXT E**

3.3 What is the approximate supply and demand mega-wattage forecasted for Sunday, 29 March 2015?

[1]

✓ **Accept 28 000 Megawatts (MW) OR 29 000 Megawatts (MW)**

**QUESTIONS: TEXT F**

3.4 What is Earth Hour?

[1]

- ✓ **It is an hour (in the evening) on a certain date whereby people are encouraged to switch off all electricity and appliances etc. in order to promote going green and being environmentally friendly.**

3.5 On what date is Earth Hour scheduled?

[1]

- ✓ **28 March 2015**

3.6 What is being implied about South Africa with the comparison between Earth Hour and Earth Year?

[2]

**Use discretion:**

- ✓ **It is implied that South Africa will not be having an Earth Hour but an Earth Year between January – December 2015**
- ✓ **Due to load-shedding and Eskom not supplying electricity.**
- ✓ **That South Africa will be without electricity for a whole year instead of an hour.**

**QUESTIONS: TEXT E and F**

3.7 In your view, does TEXT E support the advertiser’s viewpoint as expressed in TEXT F? Justify your response.

[2]

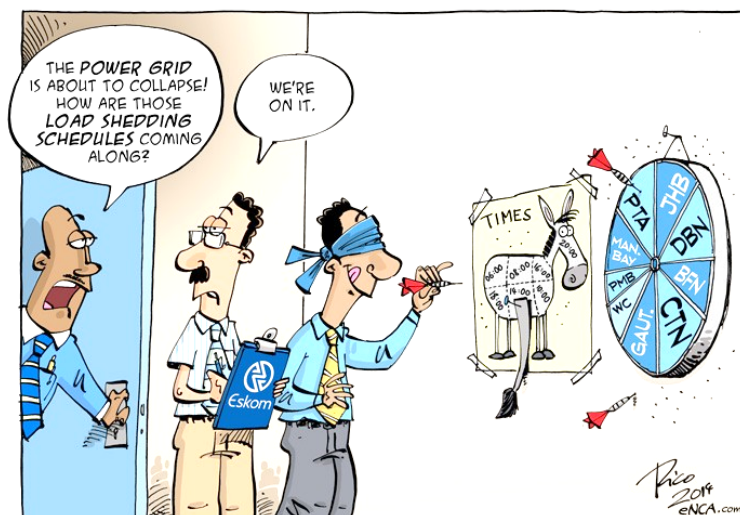
- ✓ **Text E displays Eskom’s current supply and demand for electricity between 24 and 29 March 2015. This covers March the 28, the day of Earth Hour. The supply and demand seem to be on par; therefore, there seems to be enough electricity to supply South Africa which contradicts Text F as it states that South Africa will be “in the dark” for the whole year.**
- ✓ **There does seem to be times where there is a difference between supply and demand which could result in load-shedding but not to the extent expressed in Text F.**
- ✓ **Text F seems to be an over-exaggeration in comparison to Text E’s statistics**

[10]

**QUESTION 4: ANALYSING CARTOONS**

Study **TEXT G** and **TEXT H** and answer the set questions:

**TEXT G:**





TEXT H:



**QUESTIONS: TEXT G**

4.1 Why are the words, “Power Grid” and “Load Shedding Schedules” written in bold? [1]

- ✓ They are bold in order to place emphasis on them

4.2 What game are the men playing to determine the times for the load-shedding schedule? [1]

- ✓ They are playing “pin the tail on the donkey”

4.3 What are the employees’ attitudes towards their work? You need to refer to their body language and facial expressions when justifying your response. [1]

- ✓ Use discretion: any suitable adjective. The employees seem indifferent/ tired/ fatigued/ disillusioned/ jaded/ fed-up/ disinterested/ apathetic towards their work/ job. = ½ mark
- ✓ This is seen in their facial expressions with their droopy eyes, slouching posture and relaxed/ tired poses. The man who is blind-folded seems upbeat/ thoughtful/ happy/ like he is having a good time - only because he is messing around on the job/ playing a game and it is taking his mind off his tedious job. = ½ mark

4.4 Explain what the cartoonist is implying about Eskom and their load-shedding schedules. Justify your response with close reference to the cartoon. [2]

- ✓ The cartoonist is suggesting that there is no structure/ sense to the way in which Eskom decides on the load-shedding schedule
- ✓ They are implying that it is completely random and a “guessing game”
- ✓ They might as well play “pin the tail on the donkey” to decide on the times and “blind darts” to decide on the areas – both are done while blindfolded and yield completely random results
- ✓ They are implying that the load-shedding schedules are a joke/ “game”

## QUESTIONS: TEXT H

4.5 The logo that is being stopped/ pushed up the hill by “South Africa” is for which company? [1]

- ✓ **The company is Eskom**

4.6 Explain the underlying message of this cartoon and how it is communicated. [2]

**Use discretion: one mark for message, one mark for how it is communicated**

### **Message:**

- ✓ **The underlying message of the cartoon is that Eskom and load-shedding are causing South Africa’s economy to decline downhill towards/ into a recession**
- ✓ **That load-shedding is affecting South Africa’s economy drastically and causing it to go downhill – to go backwards in a sense to the days when we were in a recession**

### **Communicated:**

- ✓ **It is communicated with the use of the Eskom logo with the words load-shedding written on it that is rolling downhill. Its size in comparison to South Africa highlights how big the problem is.**
- ✓ **The little man that represents South Africa is trying his hardest to stop the logo from rolling towards the road sign labelled, ‘recession’ - South Africans don’t want to go towards a recession or go downhill but it seems inevitable as “South Africa” can’t seem to hold back the effects that load-shedding is having on the economy – it is “an uphill battle”**

4.7 Discuss your response to the dilemma South Africa is facing as presented in this cartoon. Substantiate your response. [2]

- ✓ **Use discretion: learner’s own response – they must discuss the dilemma of South Africa’s economy declining towards a recession and that Eskom and load-shedding is the cause for the country going downhill. They must substantiate their response by discussing how load-shedding is affecting the economy and how that can cause us to go into a recession.**

## QUESTION 5: USING LANGUAGE CORRECTLY

Read **TEXT I** and answer the set questions:

### TEXT I

#### **Lighter side of load-shedding**

[www.hayibo.com](http://www.hayibo.com), 13 June 2008

#### **Blackouts back as Eskom caught off-guard by shock cooling called “winter”**

A week after announcing that load-shedding would be halted, Eskom says an unexpected change in the Earth’s axis has plunged the country into a time of cold and darkness, prompting possible future power cuts. The phenomenon, identified by scientists as “winter”, has reportedly caused widespread panic at the utility.

Addressing journalists at Eskom’s Megawatt Park headquarters this morning, spokesman Eddie Motsepe apologized to consumers in advance for possible power outages, but said that the dramatic shift in the planet’s rotational alignment could not have been foreseen by the power provider.

“We are as confused and frightened as our consumers,” he said. “At this time all we know is that Earth has tilted over, and as such the southern hemisphere is no longer being struck by the full force of the sun’s rays.”

He said Eskom officials had confirmed that this phenomenon was known to the science community, and that it was called “winter”.

“We phoned the Geography department at the University of the Witwatersrand, and they told us,” he said.

He said he did not know whether or not “winter” would be permanent, but said the utility was preparing for the worst.

5.1. Refer to the title: *“Lighter side of load-shedding”*

5.1.1. Explain the use of the hyphen in the title.

[1]

- ✓ **It helps to create a compound word**
- ✓ **It joins two words together into one word**

5.1.2. What kind of noun does the hyphen create?

[1]

- ✓ **It creates a compound noun**

5.2. Change the word, *“halted”* into an infinitive verb.

[1]

- ✓ **The infinitive form of the verb is “to halt”**

5.3. Refer to the following sentence: “*We phoned the Geography department at the University of the Witwatersrand, and they told us.*”

5.3.1. Explain why this sentence is known as a compound sentence. [1]

- ✓ **It is a compound sentence because it contains two main/ independent clauses and the co-ordinating conjunction: ‘and’ – only half a mark for referring to it being a FANBOYS conjunction.**

5.3.2. Rewrite the following clause: “*We phoned the Geography department at the University of the Witwatersrand*”. Now **quote** the following parts: the subject, verb and object as well as the predicate. [4]

**1 mark for each of these answers:**

- ✓ **Subject = “We”**
- ✓ **Verb = “phoned”**
- ✓ **Object = “the Geography department” (only this part!)**
- ✓ **Predicate = “phoned the Geography department at the University of the Witwatersrand” (the rest of the sentence after the subject)**

5.3.3. Is the verb, ‘*told*’ a transitive or intransitive verb? Provide a reason for your answer. [2]

- ✓ **It is a transitive verb**
- ✓ **Reason: it has a direct object – “us”**

**TOTAL SECTION C: 30**

**GRAND TOTAL: 70**

## TEXT A: COMPREHENSION

### What To Do During Load-shedding?

**Load-shedding is not a joke but hopefully this article will bring some light to your dark room.**

by Brittany Nygaard, December 1, 2014

For all those living in the beautiful land of South Africa, you will have experienced a lot of darkness. No, that is not a euphemism for crime or racism – I mean literal darkness. Our best friend Eskom seems to be taking multiple hits and we are facing the consequence that comes in one beautifully dreadful word: load-shedding. But alas, there is hope in the darkness. Even though in the moment we panic and wonder what on earth we did before the Internet, I am here as your fairy godmother to enlighten you as to what you can do when load-shedding makes an unwelcome visit to your district.

#### 1. Go Green

Load-shedding is the perfect opportunity for you to turn your crib into an environmentally friendly zone. Yes, I'm talking about throwing your electric oven out and replacing it with a gas one. Heck, even get rid of that kettle and toaster; we shouldn't be relying on appliances that rely on Eskom. So go big and de-electrify your house so that you can actually have a cup of tea while you study by candlelight. People who really want to fully commit to this one can actually just move into a local campsite and give up on all things modern. What you will need for this activity is a lot of cash and enthusiasm.

#### 2. Use your Pinterest account

This is the best and probably only opportunity that you will have to actually make something from your 'DIY' Pinterest folder. For those of us who kick it old school and use candles rather than solar power or torches, this is the best time to add some aesthetics to your load-shedding problem. In fact, go big and have that dinner by candlelight that you've always wanted ever since you saw it on some 'romcom' that promised you love and happiness. Tip: this activity might require you to print out the instructions beforehand unless you are fancy and have data and are not with Cell C.

#### 3. Get to know your friends

We've all seen the research. We know that since technology has reached the level of WhatsApp we have become socially awkward freaks who only know how to compliment someone when they post a selfie on Facebook. Well, this is the perfect time to get some of those old school social skills back. Walk to a friend's house (if you even know where they live) and start up a conversation with them. Tip: start by asking what their real middle name is – Facebook can never be trusted. I find this activity particularly useful because you never know if you're actually friends with a serial killer.

Please turn over to continue reading the comprehension...

**TEXT A: COMPREHENSION****What To Do During Load-shedding?** Continued...**4. Earn your Degree**

This is actually the perfect opportunity to study and learn stuff. I know most people have finished exams, but now is the best time to read that course reader from first year. No 9GAG, no Buzzfeed, no Facebook or Twitter (unless your smartphone still has power and you have data for days). All the distractions are gone and you can finally really work towards deserving that degree you got that one time from that place you never want to visit again. All you will need for this activity is not to have burnt all of your course readers in post-degree happiness.

**6. Prepare in Advance**

I can't stress this helpful hint enough. Yes, we have load-shedding schedules but this is also South Africa, the country where the times are made up and no one knows what's going on. So, in light of understanding that power can go off at any moment remember to always have cooked bacon on standby. I can't stress this enough; it will make all of the above load-shedding activities even more bearable knowing that there is bacon at arm's length. And either way it's a win-win situation: if the power goes off you have bacon and if it doesn't go off, you still have bacon!

**TEXT B:**