

**ENGLISH HOME LANGUAGE
JUNE EXAMINATION
PAPER 1: LANGUAGE
GRADE 10**

TIME: 2 HOURS

MARKS: 70

INSTRUCTIONS:

1. This paper consists of 12 pages. Please check that your paper is complete. You need to ensure that you have all the pages as this cannot be corrected after the examination is complete.
2. Read the questions carefully and answer all questions in **full sentences** (this is a sentence with a subject and a verb).
3. Indicate the section and question number clearly.
4. Write in blue pen only.
5. Draw a right hand margin – do not write in this margin.
6. Write the question number in the centre of your page and write your answer underneath it, skipping a line between each question. Please draw a line after each complete question.
7. Please write legibly and neatly.
8. The following time allocations are a guideline on how much time you should spend on each question:

SECTION A	Question 1	COMPREHENSION:	55 minutes
SECTION B	Question 2	SUMMARY:	20 minutes
SECTION C	Question 3	ADVERTISING AND GRAPHIC TEXTS:	15 minutes
SECTION C	Question 4	CARTOONS:	15 minutes
SECTION C	Question 5	USING LANGUAGE CORRECTLY:	15 minutes

SECTION A: COMPREHENSION**Sub-total: 30 marks****QUESTION 1: READING FOR MEANING AND UNDERSTANDING**

Refer to and detach **TEXT A** and **TEXT B** at the end of this examination and answer the set questions:

QUESTIONS: TEXT A

- 1.1. What **type of question** has been used in the title: “*What To Do During Load-shedding?*” [1]
- 1.2. **Explain** the **play on words** in “*bring some light to your dark room*”. [2]
- 1.3. Who is the author of this article? [1]
- 1.4. What is a **euphemism**? [1]
- 1.5. Provide your own **example** of a euphemism. [1]
- 1.6. Choose which **figure of speech**, “*beautifully dreadful*” is an example of: [1]
- A. Paradox
 - B. Hyperbole
 - C. Oxymoron
 - D. Irony
- 1.7. Discuss the **negative connotations** associated with the words, “*Eskom*” and “*load-shedding*.” [1]
- 1.8. Provide two solutions, as provided in the sub-headings, for what to do during load-shedding. [2]
- 1.9. Name one benefit or positive outcome, as mentioned in the article, that we can gain out of not having electricity. Please do not refer to any of the sub-headings. [1]
- 1.10. Provide **one** example of **portmanteau** from the article. [1]
- 1.11. What do the words, “*Our best friend Eskom*” reveal about the **author’s attitude** towards Eskom? [1]
- 1.12. What is being **implied** about the company, Cell C when the author states: “*unless you are fancy and have data and are not with Cell C.*”? [1]
- 1.13. Discuss whether or not this article is **biased** in any way. Justify your answer with evidence. [3]
- 1.14. Identify the **theme** present throughout this whole examination paper. [1]
- 1.15. Comment on the effectiveness of any ONE technique used by the writer to engage the reader personally in the article and solutions. [2]

- 1.16. Comment critically on the suggestions made by the author about Facebook and how modern-day social skills have evolved or not evolved. [2]

QUESTIONS: TEXT B

- 1.17. What is the first step to successfully using the Load-shedding Hair Dryer? [1]
- 1.18. Correct the error in step 4 of the instructions to make them easier to understand. [1]
- 1.19. Explain why this 'solution' to load-shedding could be considered an example of **hyperbole**. [1]

QUESTIONS: TEXT A AND B

- 1.20. Provide your own definition or understanding of **satire**. [1]
- 1.21. State why TEXT A and TEXT B are **considered satirical texts**, then comment critically on the use of **humour and satire** in both texts and whether or not it has been **effective**. [4]

TOTAL SECTION A: 30

SECTION B: SUMMARY

Sub-total: 10 marks

QUESTION 2: SUMMARISING IN YOUR OWN WORDSRefer to **TEXT C** and follow these instructions:

1. Your **point-form summary** should include **5 points** and consist of **80 – 90 words**. Do not use more than 90 words.
2. Indicate your **word count** at the end of the summary.
3. You must **use your OWN words** or you will be marked down.
4. Use full sentences with a subject and a verb.
5. Provide your own title for your summary – do not count the title as part of your word count.
6. Remember all the rules and requirements you have been taught for summaries.
7. Learners whose summaries are in paragraph form will not be marked/ assessed and will receive zero for this section.

TEXT C**Extreme power cuts to black out entire cities**01 APR 2008 by [JEREMY LOVELL](#), [ERIC AUCHARD](#)

In the latest blow to South Africans already reeling from scheduled load-shedding, entire cities will now be plunged into darkness as Eskom institutes even more extreme power cuts. The shock development, which will be known as sector-sharing, will see the country divided into four vertical zones, each spanning many thousands of square kilometres.

Due to unprecedented power demand from consumers and unscheduled maintenance on a number of crucial generators, electricity supply in April is forecast to be so low that only three of these four zones will be switched on during peak demand times. Towns and cities in a switched-off zone can expect to be without electricity for a minimum of six hours at a time.

A grim-faced Jacob Maroga, CEO of Eskom, told a press conference in Pretoria late on Monday that the utility had little choice but to implement the aggressive new power-saving scheme. "We've done our homework ... there is just not enough power to go around," he said, adding that emergency maintenance on Eskom's generators was partly to blame.

Eskom's generator problems include damage to vital supply cables at Koeberg nuclear power station in the Western Cape. Maroga said: "A plague of rats has moved in at Koeberg and gnawed the generator cables. Government has implemented an extermination policy, but it will take time before the rodents have been eliminated." In the meantime, both of Koeberg's reactors will have to be shut down for cable repairs.

Sector-sharing starts countrywide on April 1, said Maroga, adding: "Eskom advises all consumers not to be foolish, but to save electricity where they can."

Fooled? Don't worry, no countrywide power zones are on their way. This was simply the Mail & Guardian Online's April Fool's Day story published early on April 1, 2008.

TOTAL SECTION B: 10

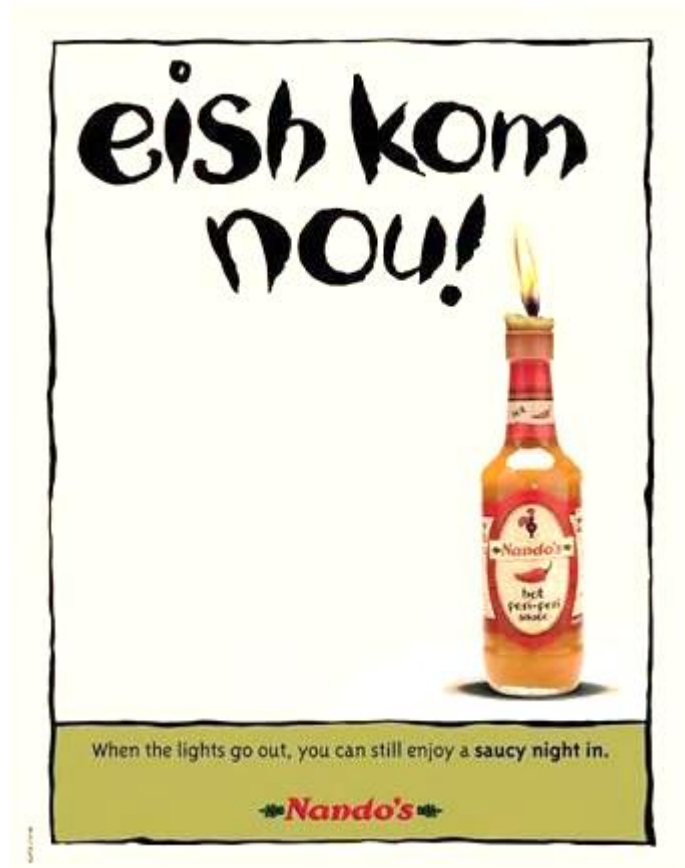
SECTION C: LANGUAGE IN CONTEXT

Sub-total: 30 marks

QUESTION 3: ANALYSING ADVERTISING AND OTHER GRAPHIC TEXTS

Examine TEXT D, TEXT E and TEXT F below and then answer the set questions:

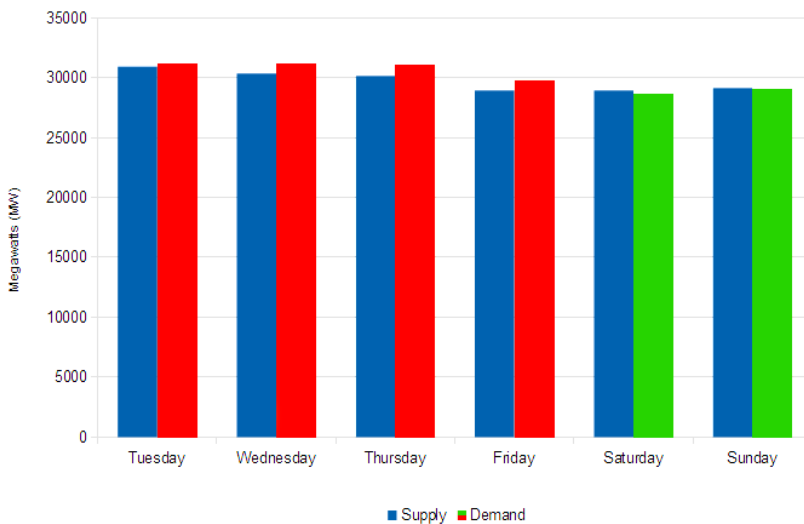
TEXT D:



TEXT E:

Eskom supply and demand forecast

24 March - 29 March 2015



TEXT F:



QUESTIONS: TEXT D

3.1 To whom is Nando's referring with the words: "Eish kom nou"? [1]

3.2 Explain why the quote: "When the lights go out, you can still enjoy a **saucy night in.**" can be described as making use of both a **pun** and **innuendo**. [2]

QUESTIONS: TEXT E

3.3 What is the approximate supply and demand mega-wattage forecasted for Sunday, 29 March 2015? [1]

QUESTIONS: TEXT F

3.4 What is Earth Hour? [1]

3.5 On what date is Earth Hour scheduled? [1]

3.6 What is being **implied** about South Africa with the **comparison** between Earth Hour and Earth Year? [2]

QUESTIONS: TEXT E and F

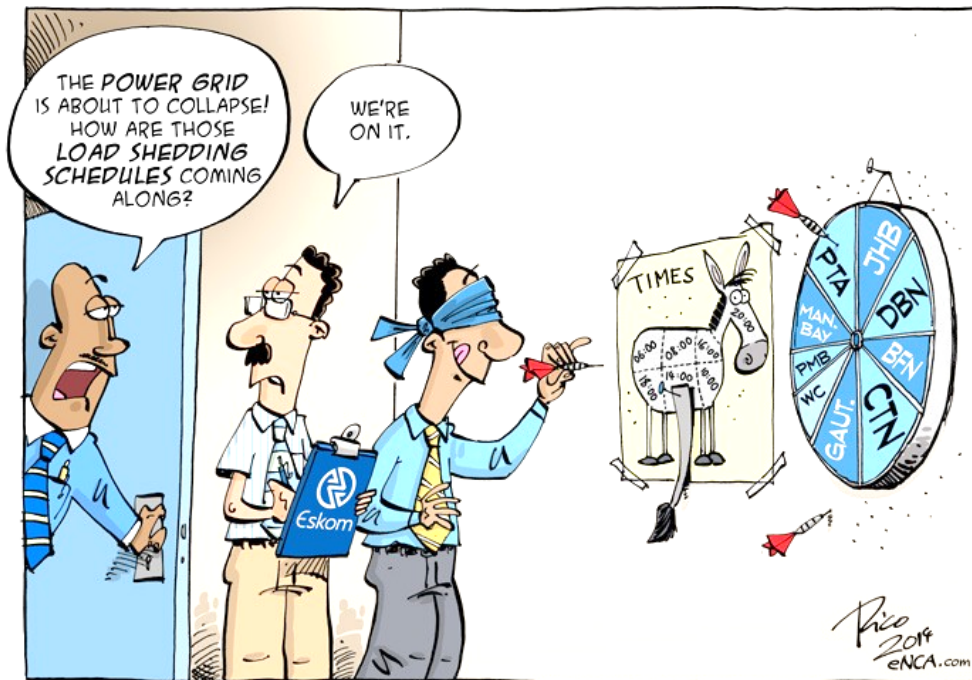
3.7 In your view, does TEXT E support the advertiser's viewpoint as expressed in TEXT F? **Justify your response.** [2]

[10]

QUESTION 4: ANALYSING CARTOONS

Study **TEXT G** and **TEXT H** and answer the set questions:

TEXT G:



TEXT H:



QUESTIONS: TEXT G

- 4.1 Why are the words, "Power Grid" and "Load Shedding Schedules" **written in bold**? [1]
- 4.2 What game are the men playing to determine the times for the load-shedding schedule? [1]
- 4.3 What are the **employees' attitudes** towards their work? You need to refer to their **body language** and **facial expressions** when justifying your response. [1]

4.4 Explain what the cartoonist is **implying** about Eskom and their load-shedding schedules. Justify your response with **close reference to the cartoon**. [2]

QUESTIONS: TEXT H

4.5 The logo that is being stopped/ pushed up the hill by “South Africa” is for which company? [1]

4.6 Explain the **underlying message of this cartoon** and how it is communicated. [2]

4.7 **Discuss your response** to the dilemma South Africa is facing as presented in this cartoon. **Substantiate your response**. [2]

[10]

QUESTION 5: USING LANGUAGE CORRECTLY

Read **TEXT I** and answer the set questions:

TEXT I

Lighter side of load-shedding

www.hayibo.com, 13 June 2008

Blackouts back as Eskom caught off-guard by shock cooling called “winter”

A week after announcing that load-shedding would be halted, Eskom says an unexpected change in the Earth’s axis has plunged the country into a time of cold and darkness, prompting possible future power cuts. The phenomenon, identified by scientists as “winter”, has reportedly caused widespread panic at the utility.

Addressing journalists at Eskom’s Megawatt Park headquarters this morning, spokesman Eddie Motsepe apologized to consumers in advance for possible power outages, but said that the dramatic shift in the planet’s rotational alignment could not have been foreseen by the power provider.

“We are as confused and frightened as our consumers,” he said. “At this time all we know is that Earth has tilted over, and as such the southern hemisphere is no longer being struck by the full force of the sun’s rays.”

He said Eskom officials had confirmed that this phenomenon was known to the science community, and that it was called “winter”.

“We phoned the Geography department at the University of the Witwatersrand, and they told us,” he said.

He said he did not know whether or not “winter” would be permanent, but said the utility was preparing for the worst.

5.1. Refer to the title: “*Lighter side of load-shedding*”

5.1.1. Explain the use of the **hyphen** in the title. [1]

5.1.2. What kind of **noun** does the hyphen create? [1]

5.2. Change the word, “*halted*” into an **infinitive verb**. [1]

5.3. Refer to the following sentence: “*We phoned the Geography department at the University of the Witwatersrand, and they told us.*”

5.3.1. Explain why this sentence is known as a **compound sentence**. [1]

5.3.2. Rewrite the following clause: “*We phoned the Geography department at the University of the Witwatersrand*”. Now **quote** the following parts: **the subject, verb and object as well as the predicate.** [4]

5.3.3. Is the verb, ‘*told*’ a **transitive or intransitive verb**? Provide a reason for your answer. [2]

[10]

TOTAL SECTION C: 30

GRAND TOTAL: 70

TEXT A: COMPREHENSION

What To Do During Load-shedding?

Load-shedding is not a joke but hopefully this article will bring some light to your dark room.

by Brittany Nygaard, December 1, 2014

For all those living in the beautiful land of South Africa, you will have experienced a lot of darkness. **No, that is not a euphemism for crime or racism** – I mean literal darkness. Our best friend Eskom seems to be taking multiple hits and we are facing the consequence that comes in one beautifully dreadful word: load-shedding. But alas, there is hope in the darkness. Even though in the moment we panic and wonder what on earth we did before the Internet, I am here as your fairy godmother to enlighten you as to what you can do when load-shedding makes an unwelcome visit to your district.

1. Go Green

Load-shedding is the perfect opportunity for you to turn your crib into an environmentally friendly zone. Yes, I'm talking about throwing your electric oven out and replacing it with a gas one. Heck, even get rid of that kettle and toaster; we shouldn't be relying on appliances that rely on Eskom. So go big and de-electrify your house so that you can actually have a cup of tea while you study by candlelight. People who really want to fully commit to this one can actually just move into a local campsite and give up on all things modern. What you will need for this activity is a lot of cash and enthusiasm.

2. Use your Pinterest account

This is the best and probably only opportunity that you will have to actually make something from your 'DIY' Pinterest folder. For those of us who kick it old school and use candles rather than solar power or torches, this is the best time to add some aesthetics to your load-shedding problem. In fact, go big and have that dinner by candlelight that you've always wanted ever since you saw it on some 'romcom' that promised you love and happiness. Tip: this activity might require you to print out the instructions beforehand unless you are fancy and have data and are not with Cell C.

3. Get to know your friends

We've all seen the research. We know that since technology has reached the level of WhatsApp we have become socially awkward freaks who only know how to compliment someone when they post a selfie on Facebook. Well, this is the perfect time to get some of those old school social skills back. Walk to a friend's house (if you even know where they live) and start up a conversation with them. Tip: start by asking what their real middle name is – Facebook can never be trusted. I find this activity particularly useful because you never know if you're actually friends with a serial killer.

Please turn over to continue reading the comprehension...

TEXT A: COMPREHENSION

What To Do During Load-shedding? Continued...

4. Earn your Degree

This is actually the perfect opportunity to study and learn stuff. I know most people have finished exams, but now is the best time to read that course reader from first year. No 9GAG, no Buzzfeed, no Facebook or Twitter (unless your smartphone still has power and you have data for days). All the distractions are gone and you can finally really work towards deserving that degree you got that one time from that place you never want to visit again. All you will need for this activity is not to have burnt all of your course readers in post-degree happiness.

6. Prepare in Advance

I can't stress this helpful hint enough. Yes, we have load-shedding schedules but this is also South Africa, the country where the times are made up and no one knows what's going on. So, in light of understanding that power can go off at any moment remember to always have cooked bacon on standby. I can't stress this enough; it will make all of the above load-shedding activities even more bearable knowing that there is bacon at arm's length. And either way it's a win-win situation: if the power goes off you have bacon and if it doesn't go off, you still have bacon!

TEXT B:

