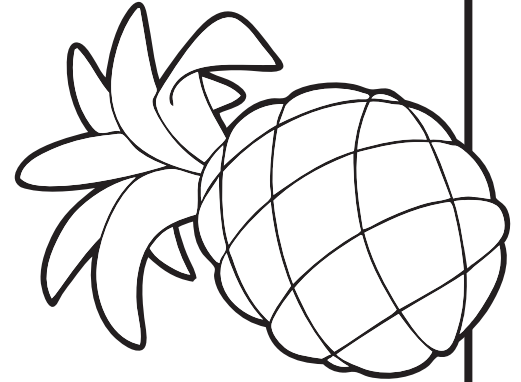
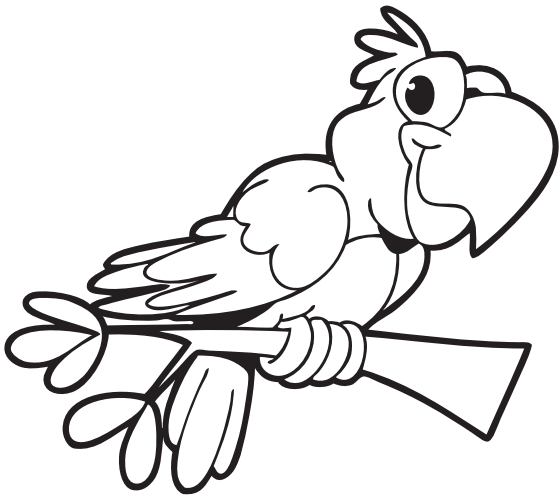
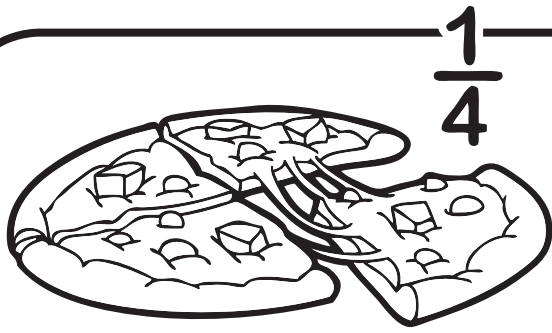


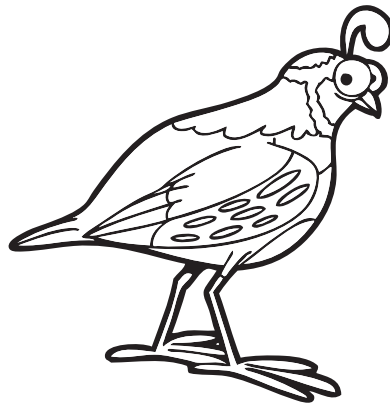
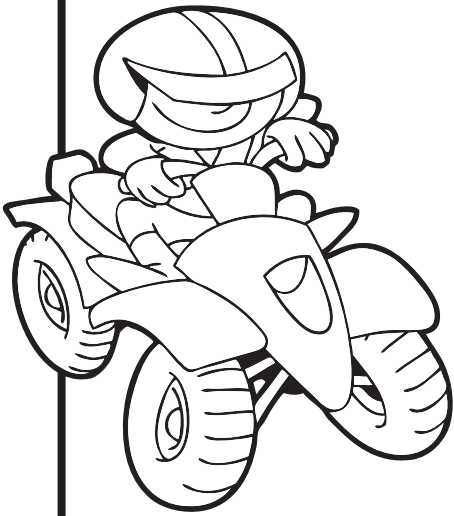
Pp



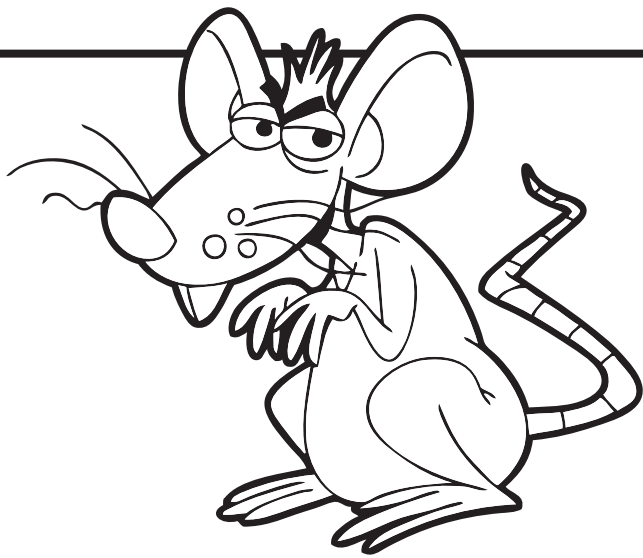
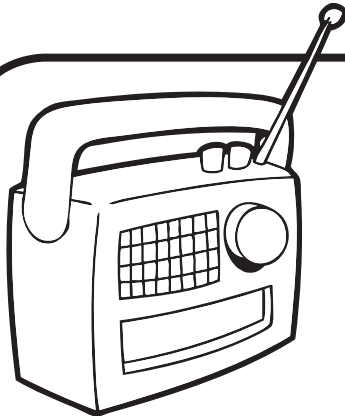
Handwriting practice lines consisting of multiple sets of solid top and bottom lines with a dashed middle line.



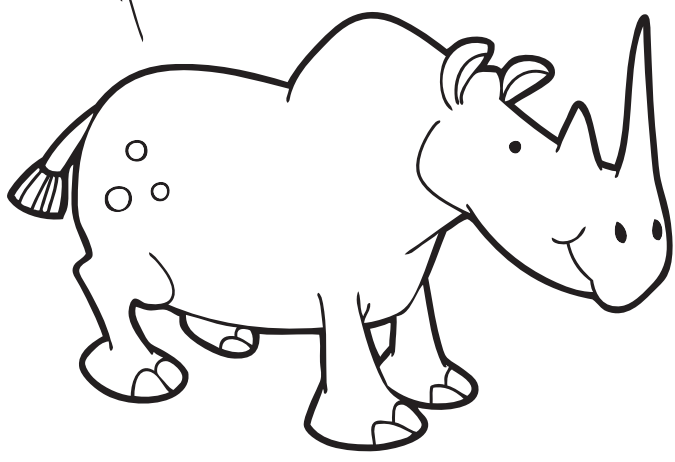
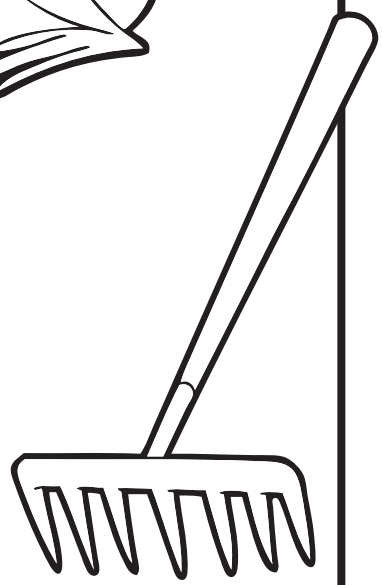
Q q



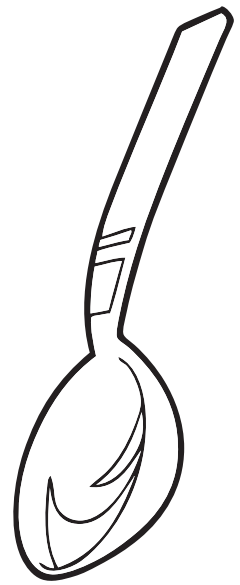
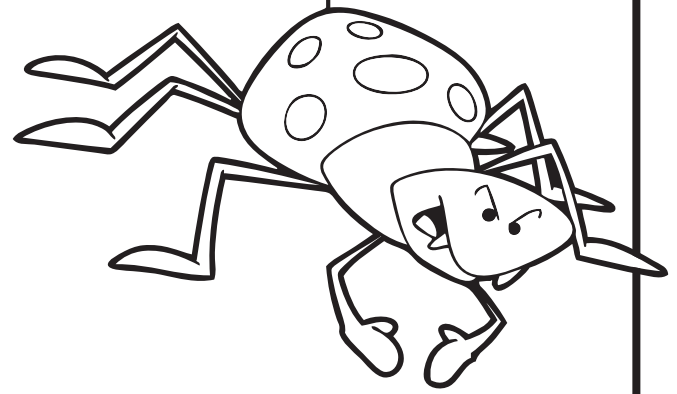
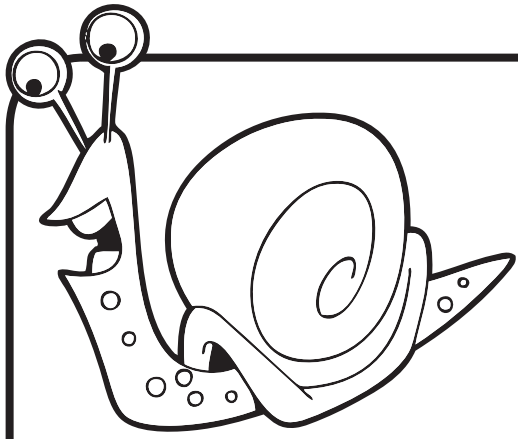
Handwriting practice lines consisting of a solid top line, a dashed middle line, and a solid bottom line, repeated multiple times.



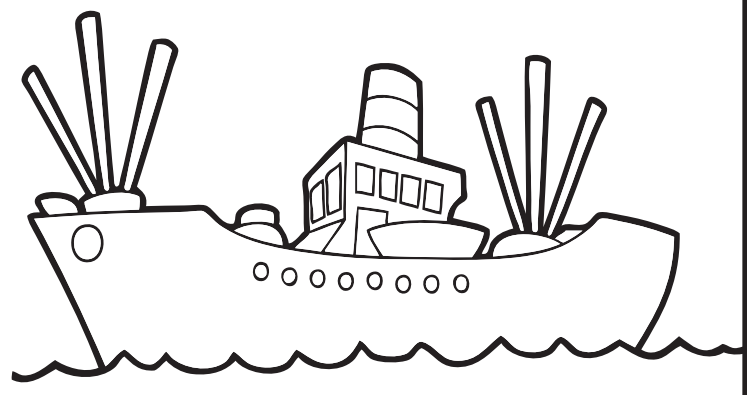
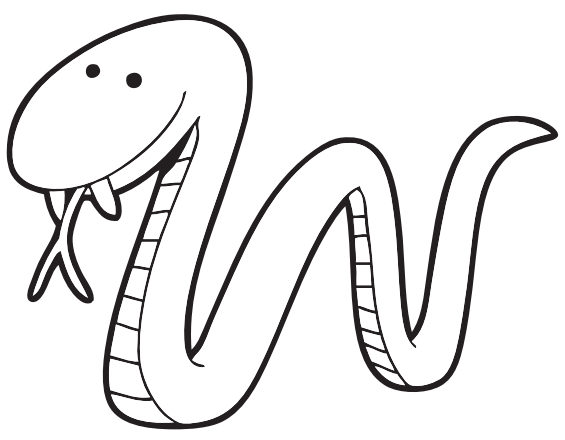
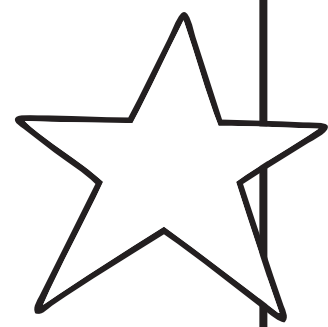
# Rr



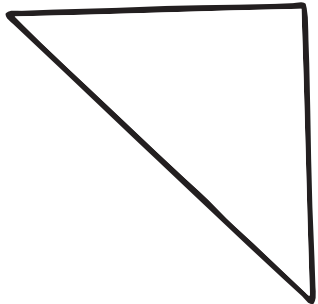
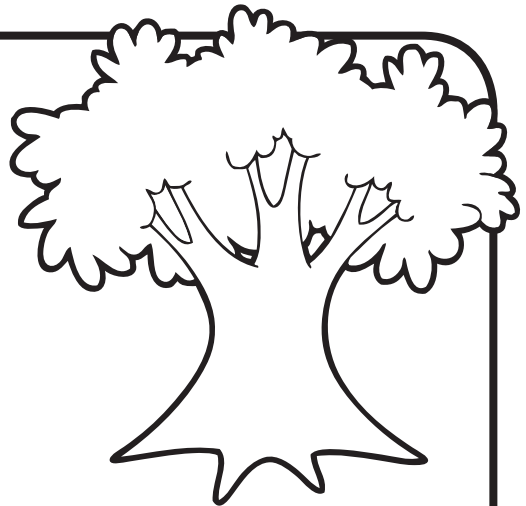
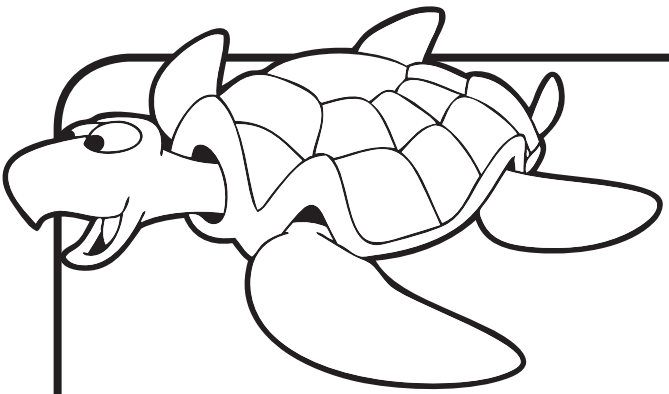
Handwriting practice lines consisting of a solid top line, a dashed middle line, and a solid bottom line, repeated multiple times.



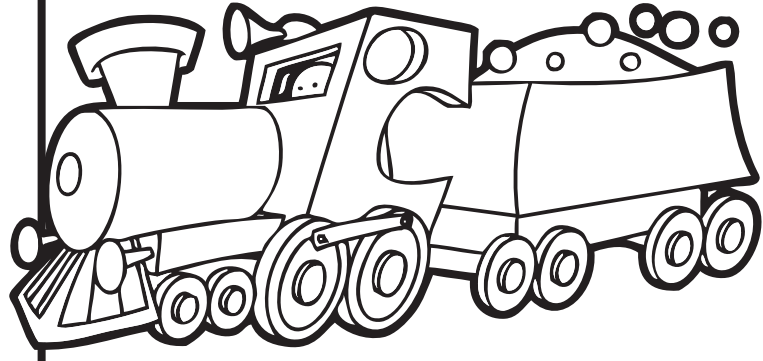
Ss



Handwriting practice lines consisting of a solid top line, a dashed middle line, and a solid bottom line.



T t



Handwriting practice lines consisting of a solid top line, a dashed middle line, and a solid bottom line, repeated multiple times.