



basic education

Department:
Basic Education
REPUBLIC OF SOUTH AFRICA

AMAMAKI

UKUHLOLA KUKAZWELONKE KONYAKA NONYAKA 2014 IBANGA 3 ISIZULU ULIMI LWASEKHAYA ISIVIVINYO

AMAMAKI: 40

ISIKHATHI: 1 IHORA

ISIFUNDAZWE _____

ISIFUNDA _____

ISIYINGI _____

IGAMA LESIKOLE _____

INOMBOLO YE-EMIS (9 amadijithi)

--	--	--	--	--	--	--	--	--

IKLASI (Isib. 3A) _____

ISIBONGO _____

IGAMA _____

UBULILI (✓)

UMFANA

INTOMBAZANE

USUKU LOKUZALWA

C	C	Y	Y	M	M	D	D
---	---	---	---	---	---	---	---

Lesi sivivinyo sinamakhasi ayi-12 ngaphandle kwekhava.

Imiyalelo kumfundi:

1. Funda ngokucophelela yonke imiyalelo kanye nemibuzo.
2. Phendula yonke imibuzo ezikhaleni ozinikeziwe.
3. Uthisha uzokusiza ukuba wenze imisebenzi yokuzilungiselela ngaphambi kokuqala ukubhala isivivinyo.
4. Ubude besivivinyo buyimizuzu engama-60.

Imisebenzi yokuzilungiselela

1. Kokelezela uhlamvu olunempendulo efanele.

Izinkomo zisinika ...

- A isinkwa.
- B ubisi.
- C ujamu.
- D itiye.

Uphendule ngokufanele uma ukokelezele u'B'.

2. Kokelezela izenzo.

Umfana uyahamba kodwa intombazane iyagi jima.

Uphendule ngokufanele uma ukokelezele igama elithi 'uyahamba' kanye nelithi 'iyagi jima'.

3. Faka uphawu (x) eduze kwebhokisi elifanele.

Ilanga lisinika ...

amanzi.	
ukudla.	
ukukhanya.	x
umoya.	

Uphendule ngokufanele uma ubeke uphawu (x) ebhokisini eliseduze negama elithi 'ukukhanya'.

4. Umusho olandelayo usitshela ngokuthi axu jwa kan jani amazinyo. Sebenzisa lezi zinombolo kusukela 1-4 ukukhombisa ukulandelana kwendlela yokugezwa kwamazinyo.

Manzisa isixubho.	
Yakaza umlomo wakho ngamanzi.	
Hlikihla uhlanze amazinyo ngesixubho.	
Faka umuthi wokuxubha esixu jini.	

Uphendule ngokufanele uma imisho uyilandelanise ngale ndlela: 1, 4, 3, 2.

Esivivinyweni sakho uzophendula eminye imibuzo efana nalena osuyiphendulile.

Isivivinyo siqala ekhasini elilandelayo.

Funda indaba bese uphendula imibuzo 1-6.

"Ngomid," kumemeza uNtuthwane.

"Yini ungazitholeli amanzi okuphuza emfuleni?" Kubuza uJuba esihlahleni esiseduze nehlathi. "Usize uqaphele ungaphonseki phakathi emanzini."

UNtuthwane wagi jima waya emfuleni waqala ukuphuza amanzi. Ngokuphazima kweso, kwaqhamuka umoya onamandla wavunguza wadudulela uNtuthwane emanzini.

"Ngisizeni bo! Ngiyaminza!" Kukhala uNtuthwane.

UJuba wabe azi ukuthi kufanele asize uNtuthwane ngokushesha. Wathatha iqabunga eliwe esihlahleni waliqathaza emanzini. UNtuthwane wagibela kulo wantanta ngokuphepha waze waphumela endaweni eyomile.

Emva kwezinsuku ezimbili uNtuthwane wabona umzingeli efuna ukubamba uJuba. UNtuthwane wayazi ukuthi kufanele asize uJuba ngokushesha. Ngakho-ke wagibela onyaweni lomzingeli wamncinza eqakaleni. "Eshu!" kukhala umzingeli. UJuba wezwa umzingeli ekhala wandiza wabaleka wayocasha esihlahleni.

[Ihunyushwe isuselwa endabeni ka-Anne Mc Govern].

1. Bhala isihloko esifanele le ndaba.

.....

2 Kokelezela uhlamvu oluseduze nempendulo efanele.
Abalingiswa abasemqoka endabeni u...

- A Ntuthwane noNdlovu.
- B Ntuthwane noGundane.
- C Ntuthwane noJuba.
- D Ntuthwane noMzingeli.

3. Faka uphawu (✕) eduze nempendulo efanele.
UNtuthwane noJuba bahlala ...

entabeni.	
ehlathini.	
endlini.	
esidlekeni.	

4. Khombisa ukulandelana kwezigameko endabeni.
Faka izinombolo 1-4 emabhokisini ukuveza ukulandelana kwemisho.

"Yini ungazitholeli amanzi okuphuza emfuleni?"	
UJuba wandiza ngaphezu komfula waqathaza iqabunga.	
"Ngisizeni bo! Ngiyaminza!"	
"Ngomile," kumemeza uNtuthwane.	

5. Kungani uNtuthwane ancinza umzingeli?

UNtuthwane wancinza umzingeli ngoba

.....

.....

.....

6. Ngokwakho ukucabanga, ubona ukuthi uNtuthwane noJuba baba ngabangane? Ngani?

Ngicabanga ukuthi uNtuthwane noJuba

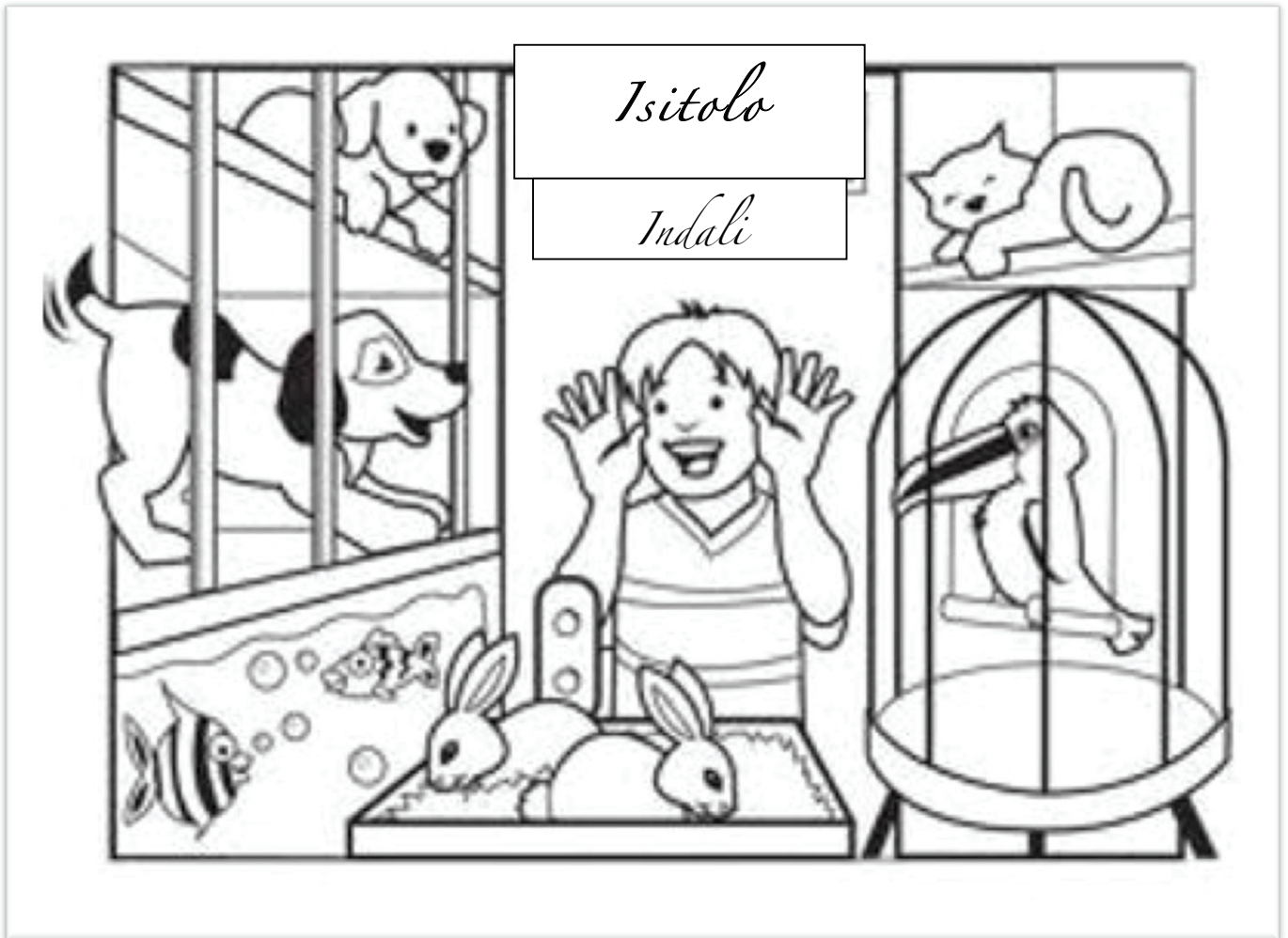
.....

.....

.....

.....

7. Bukisisa isikhangisi bese uphendula imibuzo 7.1-7.2.



Isitolo

Indali

7.1 Kokelezela uhlamvu olunempendulo ef anele.

Isitolo sezilwane zasekhaya sikhangisa ...

- A indali yezimpondo.
- B indali yezingubo.
- C indali yezilwane.
- D indali yokudla.

- 7.2 Faka uphawu (✕) eduze kwebhokisi elinempendulo efanele. Isiphi isilwane esingekho kwezidayiswa lapha ...

inkawu.	
unogwa ja.	
ikati.	
inhlanzi.	

8. Funda:

- 8.1 Isichasiso sichaza umuntu noma into. Kokelezela izichasiso **ezimbili** kulo musho.
Indlovu enkulu ithele inkawu egangile ngamanzi.
- 8.2 Ibizo igama lomuntu noma lento. Kokelezela amabizo **amabili** emshweni. Izu ihlala izilwane zasendle kanti imnyuziyemu igcina okungumlando.
- 8.3 Sihlanganiso sihlanganisa imisho. Kokelezela isihlanganiso kule misho elandelayo:
- Izintuthwane zithanda ushukela kanye namanzi.
 - Amabhumbesi adla inyama kodwa awawudli ubhanana.

9. Phinda ubhale imisho ibe senkathini ...

9.1 yaman je.

Izinkawu zagibela isihlahla eside sikabhanana.

.....
.....

9.2 edlule.

Ibhubesi libhonga kakhulu uma libona igundane.

.....
.....

9.3 edlule.

Ingwe ixosha inyamazane.

.....
.....

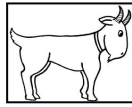
9.4 ezayo.

Umhlambi wezindlovu ubhukuda echibini.

.....
.....

10. Buka lezi zithombe bese uqedela le misho.

10.1 USipho uthanda



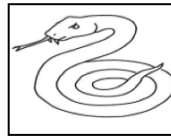
.....yakhe.

10.2 Umama uthenge



..... enkulu.

10.3 UThandeka uyesaba kabi



.....

11. Phinda ubhale imisho. Faka izimpawu zokuloba/zokukhanyisa ezimbili emshweni ngamunye.

11.1 Uneli igagu lentombazane

.....
.....

11.2 likuphi ithikithi lami lebhasi

.....
.....

11.3 Mangaki amabhasi amatekisi nezimoto ebezikhona

.....
.....

12. Gcwalisa izenzo ezifanele ezikhaleni ozinikeziwe.

12.1 Indoda ishayela imoto.

kodwa

Amadoda izimoto.

12.2 Amatilos ahlanza umkhumbi.

kodwa

Itilos umkhumbi.

13. Funda ithebuli bese uphendula imibuzo 13.1-13.3.

Izithuthi eziya esikoleni					
Igama	uMsombuluko	uLwesibili	uLwesithathu	uLwesine	uLwesihlanu
Menzi	ibhasi	ibhasi	itekisi	ibhasi	isitimela
Bongani	itekisi	ibhasi	itekisi	isitimela	isitimela
Lebo	isitimela	itekisi	ibhasi	ibhasi	isitimela
Melusi	ibhasi	itekisi	ibhasi	ibhasi	isitimela

13.1 UMenzi noMelusi baya esikoleni ngebhasi ngoMsombuluko.

Yiluphi olunye usuku abaya ngalo esikoleni begibele ibhasi?

.....

13.2 Ngezinye izinsuku bonke abafundi bahamba ngohlobo olulodwa lwesithuthi.

Ngabe yiluphi uhlobo lwesithuthi abalusebenzisayo?

.....

13.3 NgoLwesine, uBongani uhamba ngesitimela uLebo uhamba

nge.....

14. Funda igrafu bese uphendula imibuzo 14.1-14.2.

Iphrojekthi ngezilwane

Inani lezilwane	8				
	7				
	6				
	5				
	4				
	3				
	2				
	1				
		izinkawu	amadube	amabhubesi	izindlovu

14.1  Kuzenzela uhlamvu olunempendulo efanele.

Qhathanisa inani lezilwane ezisetshenziswa abafundi ukwenza iphrojekthi.

Yisiphi isilwane esisetshenziswe abafundi kakhulu?

A Indlovu.

B Inkawu.

C Idube.

D Ibhubesi.

14.2 Kokelezela uhlamvu olunempendulo efanele.

Inani lezindlovu lingaphezulu kangakanani kunenani lamabhucsi?

A 1

B 5

C 3

D 4

15. Bhala isigaba **esisodwa** esinemisho okungenani eyisi-8 ngabangani. Qikelela ukubhala izimpawu zokuloba/zokukhanyisa, uhlelo kanye nesipelingi esifanele. Ungazifaki izinombolo emishweni.

Abangani

ISAMBA: 40