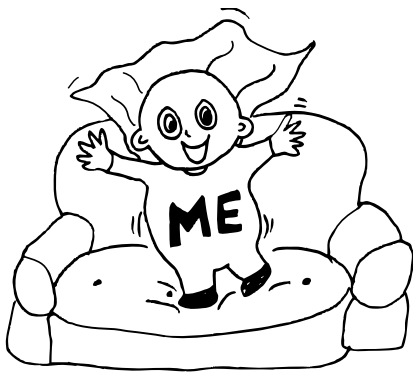
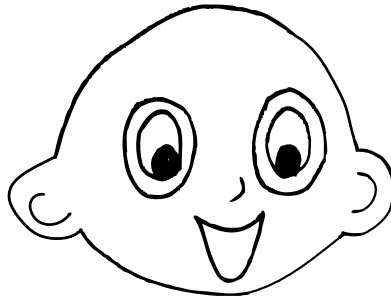
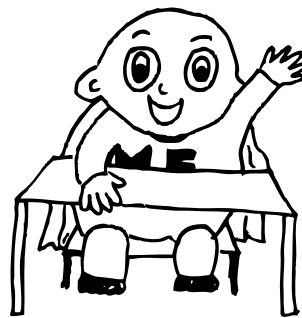


Thumbs up/thumbs down

Bru'Me is happy! Let's help Bru'Me to choose helpful things to do when he is happy. Draw a **RED** line from all the 'helpful' pictures to the 'thumbs up' on Bru'Me's right, and then draw a **BLUE** line from all the 'hurtful' pictures to the 'thumbs down' on Bru'Me's left. Bru'Me says, "Thank you for your help!"



Bru'Me jumps up and down on the couch.



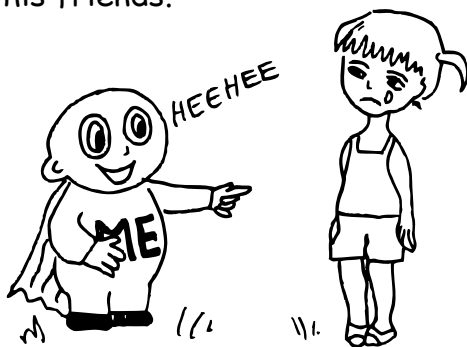
Bru'Me is enthusiastic in class.



Bru'Me plays a fun game with his friends.



Bru'Me is naughty in class.



Bru'Me teases Sally who is sad.



Bru'Me plays in the garden.